

**KEGPRZEM**

REPAIR AND INSTALLATION UNIT,  
EQUIPMENT BASE





phone. +48 698 118 000  
e-mail baza@legprzem.com.pl  
www.legprzem.com.pl

## The Mission

---

Przedsiębiorstwo Budowlano-Produkcyjne Łęgprzem in Cracow, is a leading engineering company in the construction and real estate markets. The company's main business is general construction works. We specialize in advanced storage and production facilities, public utility buildings, including office buildings, as well as engineering, laboratory and sports facilities.

We also have our own investment in the commercial real estate market in the development and rental of specialized storage and production areas.

More than 30 years of our experience and established position in the region meet today's market requirements for building investments and top-level project support. The Łęgprzem brand equals professionalism, reliability and quality of all the services we provide. We approach all our projects in a custom manner.

Our R&D activities demonstrate our innovative approach to the implementation of current projects.

## Range of Services

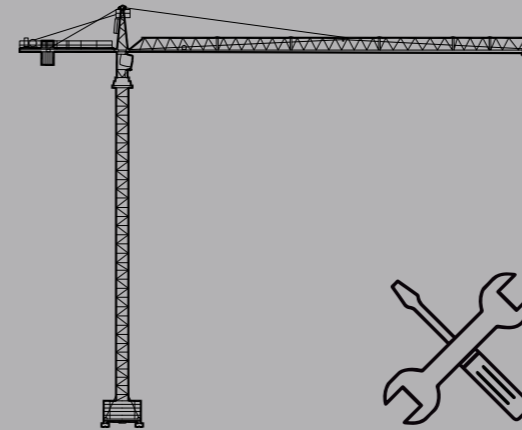
---

Our capacities involve:

- a modern repair and installation unit, that is an innovative combination of specialized processes for shot-blasting, painting and assembly/machining of steel structures,
- a park of specialized construction equipment including tower cranes, wheel cranes, heavy construction equipment and workshop facilities.

We offer support and engineering and logistic advice at every stage of the project.

We ensure a team of competent, qualified and experienced specialists, engineers, installers and operators. Our Quality Management System is certified for compliance with PN-EN ISO 9001:2015.



01.

Tower and  
wheel cranes

02

Repair and  
installation unit

03

Steel  
structures

04

Heavy  
construction  
equipment



# 01

## TOWER AND WHEEL CRANES

As part of our capacities, we offer our customers heavy load handling services at every stage of construction project. We can offer availability of our tower cranes with load capacities from 4 to 10 tons and truck cranes with load capacities from 40 to 100 tons.

Regardless of the provided services, we employ a team of authorized and experienced installers who work on the erection and dismantling of tower cranes.

We offer erection of tower cranes in the Lesser Poland, Subcarpathia and Silesia provinces and our participation in the process of commissioning and releasing equipment for work by UDT (Office of Technical Inspection) inspectors, as well as on-site services concerning maintenance and repairs of equipment throughout the project.



# 02

## REPAIR AND INSTALLATION UNIT

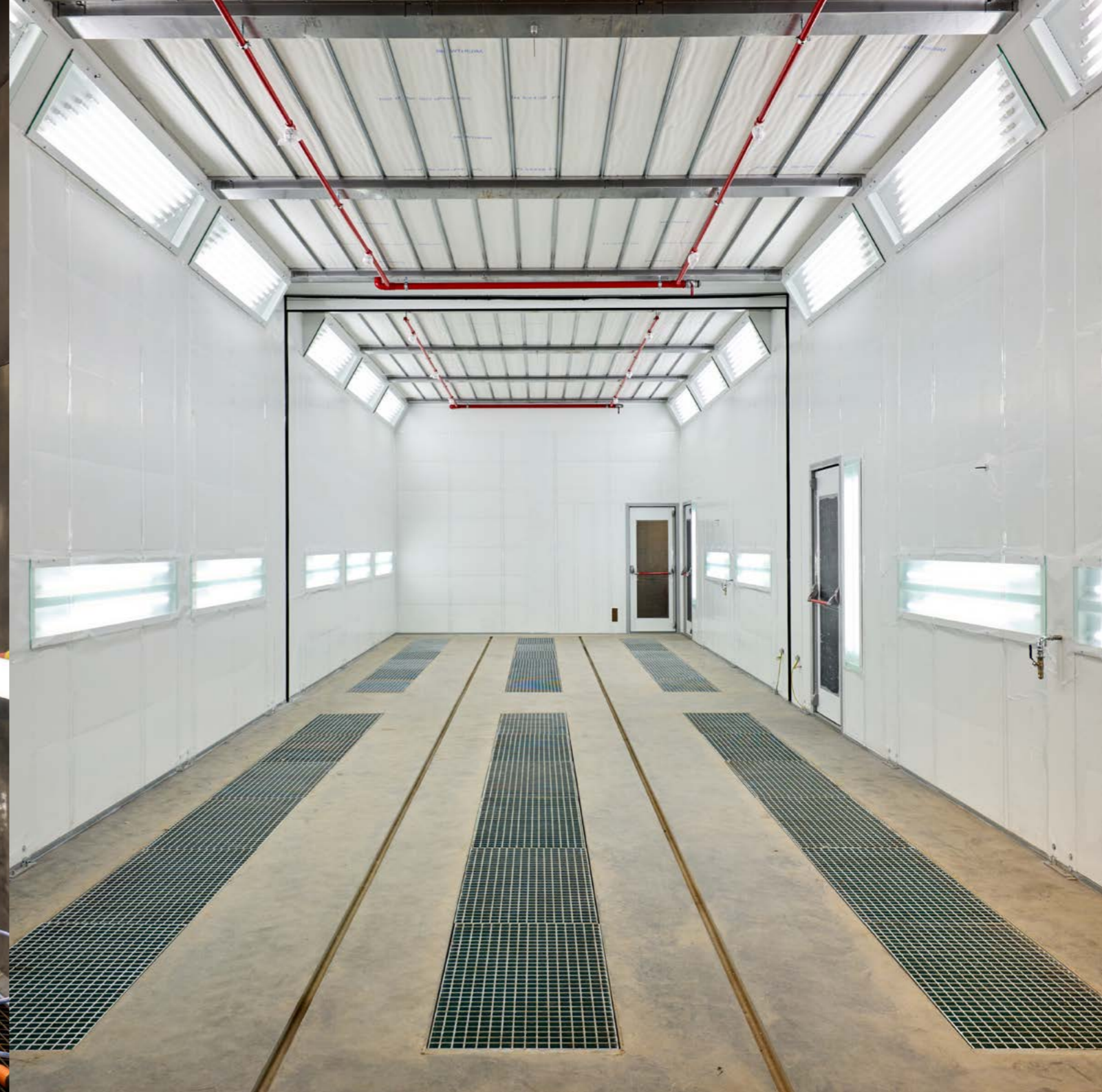
The modern repair and installation unit within the company structure is an innovative combination of specialized processes for shot-blasting, painting and assembly/machining of steel structures. The repair and installation unit offers, among other things, a specialized upgrade service for tower cranes. Our running specialized process lines for shot-blasting and painting of tower crane structure components, as well as regeneration of, among other things, pin connection sockets (to eliminate any clearances between the tower and the boom), mechanical drives, bearings and rollers, allow us to carry the operations in accordance with the highest standards of quality, environmental protection, occupational safety and on the basis of the applicable stringent legal standards.

The specialized shot-blasting chamber ensures the highest quality of cleaning steel components to prepare them for further paint renewal processes. The automatic abrasive recovery system enables a continuous and long-term process of grinding. The shot-blasting chamber is 4.45 m wide, 3.80 m high and 13.95 m long. The permissible approximate dimension of a single large-size component to be blasted is approximately 3 m x 3 m x 12 m. The blasting of workpieces is carried out using sharp-edged steel abrasives. It is possible to match the type of abrasive according to the cleaned surfaces. The automatic dust removal system ensures quality and precision. The blasting chamber operates in a sealed environment and closed air circulation, with the use of a set of dust extraction filters, to ensure that no paint chips or blasting dust is released to the environment.

Our purpose-designed painting chamber is used to apply a hydrodynamic painting method using solvent and water paints, to apply primer coatings and topcoats in the selected colours. In addition, we have an electrostatic module for electrostatic painting. We can apply fire paints to ensure adequate fire resistance of steel components, as well as protective paints to obtain an appropriate degree of corrosion resistance. It is possible to choose the right paint for the painted part according to the needs of our customers. The dimensions of the paint chamber are: width 4.48 m, height 4.00 m, length 14.70 m. The permissible approximate size of a single large component to be painted is approximately 3 m x 3 m x 12 m. These specifications allow a wide variety of small and large parts with different surface structures to be placed in the painting chamber. In addition, it is possible to automatically dry the painted component at a preset temperature in the spray booth to maintain a suitable technological and time regime. The use of an appropriate ventilation and filtration system ensures the highest quality of painting, eliminates paint chips and minimizes the emissions of volatile organic compounds into the atmosphere.

Przedsiębiorstwo Budowlano-Produkcyjne Łęgrzem in Cracow is a certified plant authorized to repair and retrofit handling equipment. All our work is supported with documents in accordance with the requirements of the Technical Inspection Office (UDT), including the expected service life between overhauls. We ensure a team of competent, qualified and experienced professionals with the appropriate UDT licenses. The repair and installation unit operates on the basis of the required legal and formal documents, including the environmental decision and the emission permit.







---

# 03

## STEEL STRUCTURES

Our repair and installation unit offers our customers design, manufacturing and erection services for steel structures. In particular, we manufacture light-weight steel structures for production and storage facilities with rest rooms, with a total area of approx. 1,000 m<sup>2</sup>.



---

# 04

## HEAVY CONSTRUCTION EQUIPMENT

Our capacities allow us to provide heavy construction equipment services.

We offer services with backhoe loaders additionally equipped with attachments for forging, loader crane trucks and smaller machines like miniexcavator or miniloader.





